

GALLAGHER

GALLAGHER EVELIUS & JONES
ATTORNEYS AT LAW

Paralegals

E



Cynthia M. Eyler

Paralegal

p: 410.951.1403

ceyler@gejlaw.com



V-card

**Creditors' Rights and Bankruptcy
Litigation**

G



Mary A. Gaiser

Paralegal

p: 410.347.1517

mgaiser@gejlaw.com

**General Tax
Real Estate and Business**



V-card

Transactions

Tax Credit Investments



Paul O. Goranin

Paralegal

p: 410.347.1874

pgoranin@gejlaw.com



V-card

Litigation

Multifamily Residential

K



Lissette C. Klaus

Paralegal

p: 410.951.1427

lklaus@gejlaw.com



V-card

General Tax

Real Estate and Business

Transactions

Tax Credit Investments

M



Sarah McCarron

Paralegal

p: 410.951.1437

smccarron@gejlaw.com



V-card

Litigation

Multifamily Residential



Diane H. McCarthy

Paralegal

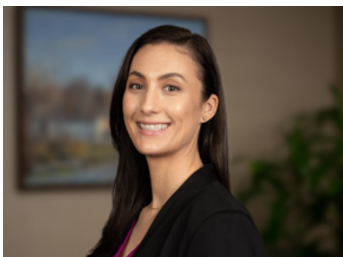
p: 410.347.1357

dmccarthy@gejlaw.com



V-card

**Real Estate and Business
Transactions**



Morgan E. Miller

Paralegal

p: 410.347.1862

mmiller@gejlaw.com



V-card

Litigation

P



Shawnakey Peterkin

Paralegal

p: 410.347.1291

speterkin@gejlaw.com



V-card

Renewable Energy

R



Pamela C. Raymond

Paralegal

p: 410.951.1413

praymond@gejlaw.com



V-card

**Commercial and Real Estate
Lending**

Renewable Energy

S



Julie P. Smith

Paralegal

p: 410.951.1401

jsmith@gejlaw.com



V-card

Litigation

W



Carrie Webster

Paralegal

p: 410.347.1345

cwebster@gejlaw.com



V-card

Health Law



Teresa L. Wesselman

Paralegal

p: 410.347.1653

Real Estate and Business

twesselman@gejlaw.com



[V-card](#)

Transactions

Commercial and Real Estate

Lending

218 North Charles Street, Suite 400, Baltimore, MD 21201

Telephone: 410.727.7702

Fax: 410.468.2786

Email: info@gejlaw.com